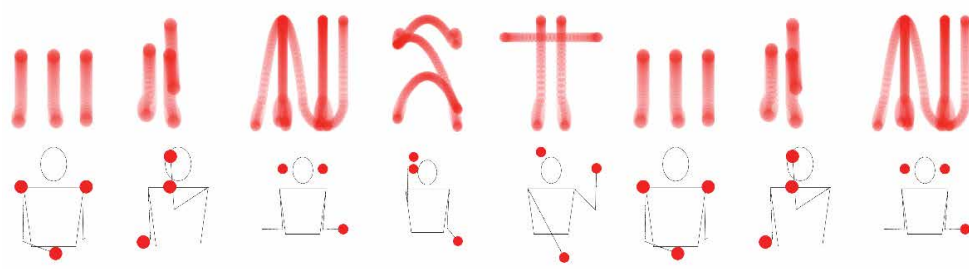
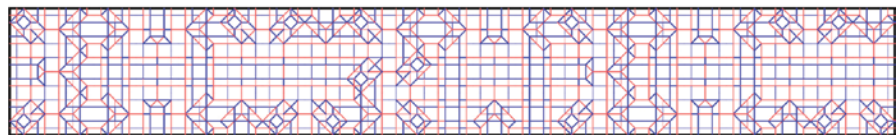


# The 2016 AMS Einstein Public Lecture in Mathematics

EINSTEIN



## ERIK DEMAINE

PROFESSOR OF COMPUTER SCIENCE, MIT

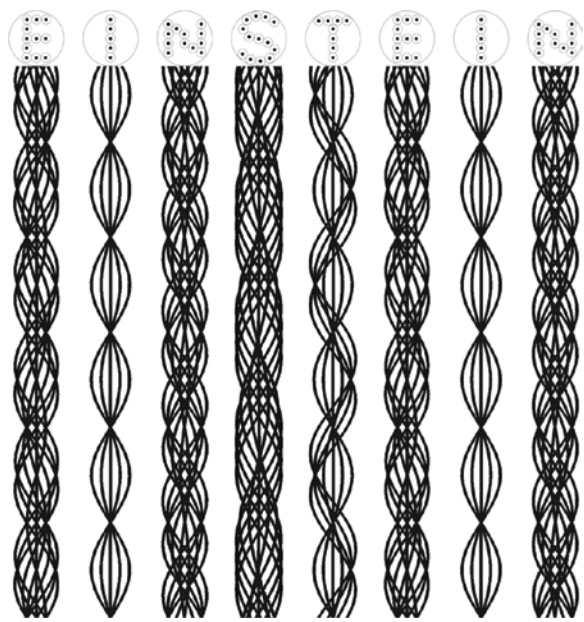
### FUN WITH FONTS: MATHEMATICAL TYPOGRAPHY

Saturday, March 5 at 5:15 p.m.

Tate Theater in the Tate Student Center  
University of Georgia • Reception to follow

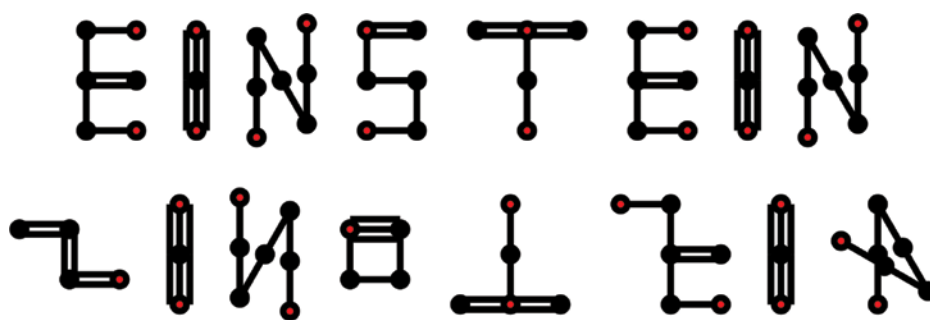
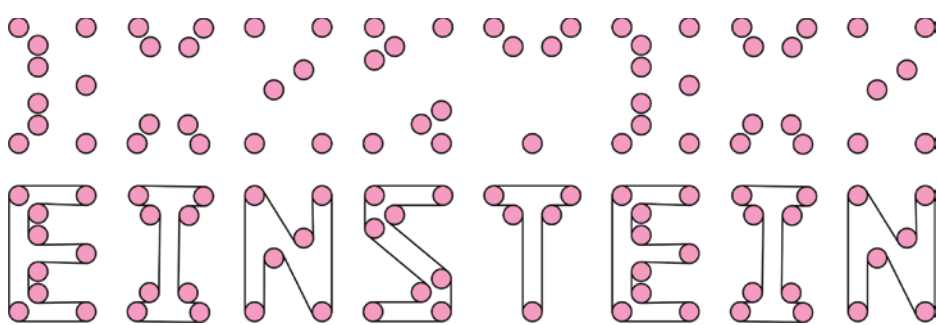


Courtesy of the University of Georgia



A former MacArthur Fellow known for his curiosity and his fun-loving approach to problems, Erik Demaine has interests ranging from origami to puzzles to glass-blowing. Over the past decade, he and his father have also designed several typefaces based on mathematical theorems and open problems. These typefaces expose the general public in a unique way to intriguing results and hard problems in hinged dissections, geometric tours, origami design, computer-aided glass design, physical simulation, protein folding, juggling, and card shuffling. Most of the typefaces include puzzle fonts, where reading the intended message requires engaging in the mathematics itself, solving a series of puzzles that illustrate the challenge of the underlying mathematical problem.

To play with the fonts, visit [erikdemaine.org/fonts](http://erikdemaine.org/fonts).



The Einstein Lecture is part of the Spring 2016  
AMS Southeastern Sectional Meeting  
(March 5-6) at the University of Georgia.

For more information:

Event details: [www.ams.org/meetings/sectional/2237\\_events.html](http://www.ams.org/meetings/sectional/2237_events.html)

Sectional meeting details: [www.ams.org/meetings/sectional/2237\\_program.html](http://www.ams.org/meetings/sectional/2237_program.html)

